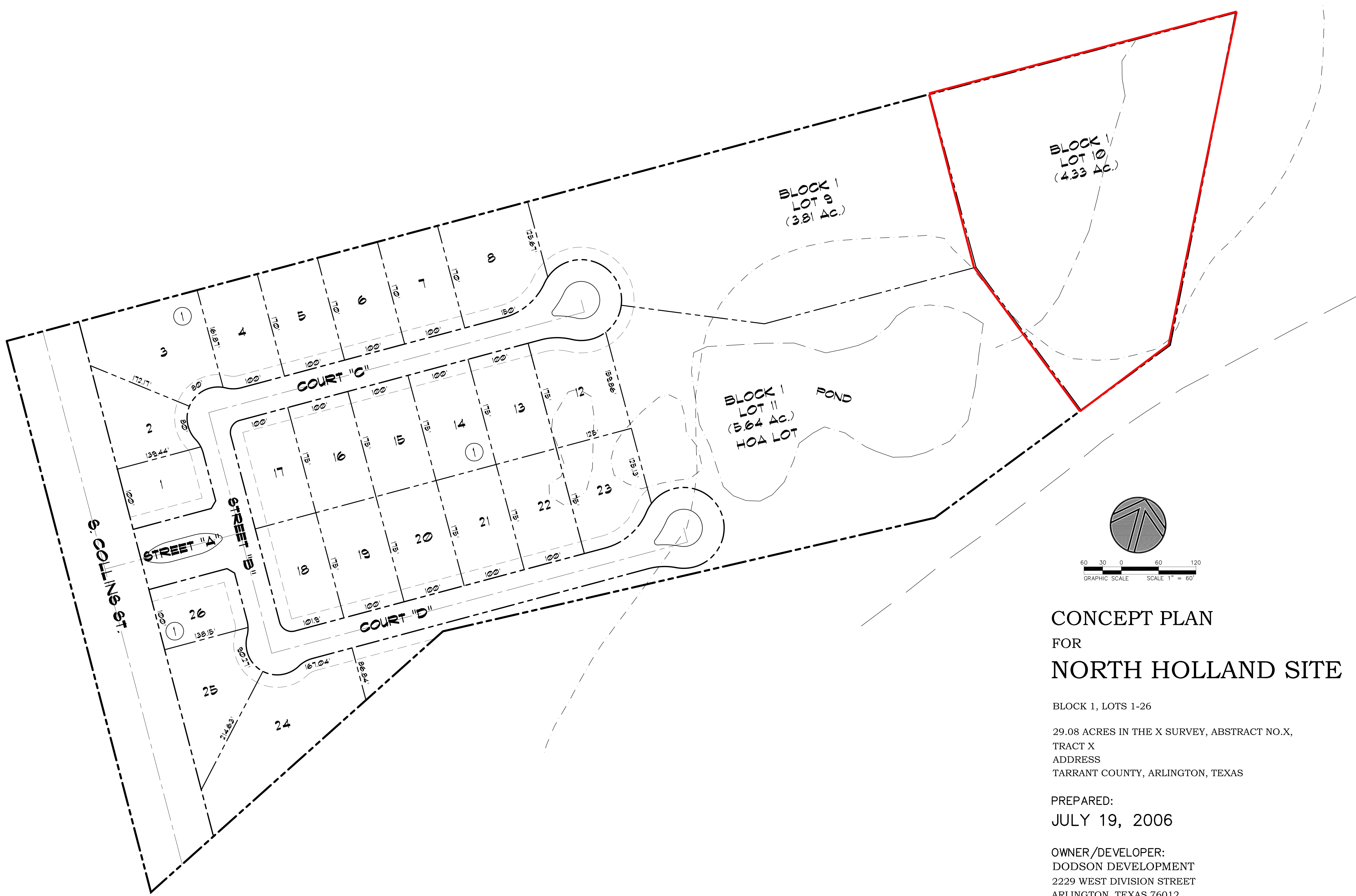


***N. Holland Road Residential Development  
Luxury Gated Estate Homesites - Arlington, Texas***



**Exclusive Luxury Estate Development Highlights:**

- Almost 30 heavily wooded and private acres located in Arlington City Limits, but Mansfield service and marketing area.
- Currently Zoned "Estate" by City of Arlington.
- Located within the highly regarded Mansfield ISD.
- Construction scheduled to start in 2007
- 24 Lots, standard size of 100' by 175'
- Several oversized Estate Lots
- 7 acre pond and park dedicated to HOA
- Walking trails, fountains, gated entry, strict architectural controls...

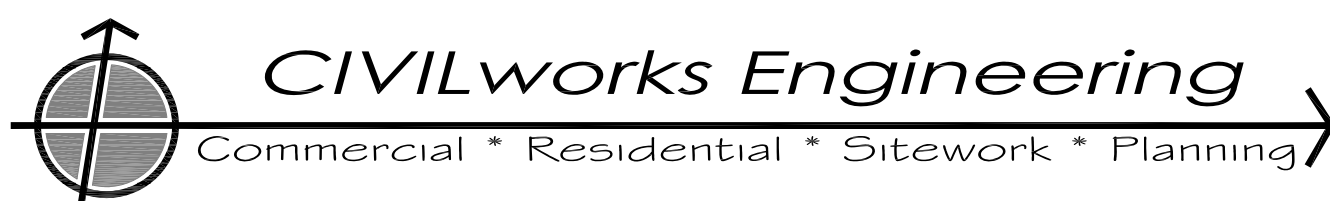


**CONCEPT PLAN  
FOR  
NORTH HOLLAND SITE**

BLOCK 1, LOTS 1-26  
29.08 ACRES IN THE X SURVEY, ABSTRACT NO.X,  
TRACT X  
ADDRESS  
TARRANT COUNTY, ARLINGTON, TEXAS

PREPARED:  
JULY 19, 2006

OWNER/DEVELOPER:  
DODSON DEVELOPMENT  
2229 WEST DIVISION STREET  
ARLINGTON, TEXAS 76012  
PHONE: (817)460-6754

ENGINEER:  
 **CIVILworks Engineering**  
Commercial \* Residential \* Sitework \* Planning  
1192 Boling Ranch Rd.  
Azle, Texas 76020  
PH: (817) 448-9595  
FAX: (817) 448-6390

LOTS	NUMBER	USES	ACREAGE
RESIDENTIAL	24	RESIDENTIAL	19.11 Ac.
OPEN SPACE	2	OPEN SPACE	9.97 Ac.
TOTAL	26	TOTAL ACREAGE	29.08 Ac.